

Advanced Semi-Rugged PDA

BM-170



pibion
Empowering Mobility

BM-170

INDUSTRIES



Education



Retail



Public Transport



Hospitality



Healthcare

KEY FEATURES & BENEFITS

Semi-Rugged



1.5m Drop Resistant, -20°C to 55°C, TouchWindow

BM-170 is an enterprise-class PDA with sleek yet semi-rugged form factor. It is designed to withstand multiple 1.5m drops to steel surface and operate in a temperature range of -20°C to 55°C. Moreover, the crack-resistant TouchWindow LCD supports substantial protection for the touch sensitive display.

Communication



HSDPA(3.5G), WiFi, A-GPS

BM-170 provides accurate and high-speed data communication. HSDPA (3.5G) mobile radio allows high-performance voice and data communication and WiFi enables reliable wireless data transmission. Furthermore, an integrated A-GPS enables tracking mobile worker's current location and streamlining route plan.

Performance



806MHz Processor, Windows Mobile 6.5

BM-170 offers the best-in-class performance. Powerful 806MHz processor and Windows Mobile 6.5 operating system deliver maximum computing power with easy system integration capability. It provides large memory capacity with 128MB RAM 256MB ROM and supports optional 3,200mAh extended battery ensuring continuous operation.

Functionality



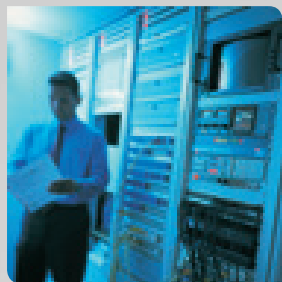
3.5" Display, 3.0 Megapixel AF Camera

BM-170 allows a wide variety of on-the-spot operation. Its easy-to-view 3.5" display with touch functionality suits for order taking, checking medical record, collecting the recipient's digital signature and more. In addition, an integrated 3.0 megapixel autofocus camera enables capturing images for proof of condition.

Advanced Semi-Rugged PDA



Finance



Field Force Automation



Logistics



Construction



Government/Public Sector

APPLICATIONS



Parcel Delivery



Order Taking



Public Safety



Mobile Physician Rounding



Mobile Learning



Stock Tracking



Fleet Management



Customer Management



Disaster Management



Facility Management



CPU
PXA320 806MHz



Memory
128 RAM 256 ROM



Battery
3.7V 1,600mAh, Li-ion
3.7V 3,200mAh, Li-ion



Bluetooth
Bluetooth Class II V2.0+EDR



GPS
Integrated A-GPS



Camera
3.0 megapixel



BM-170

SPECIFICATIONS

PHYSICAL CHARACTERISTICS	
DIMENSIONS (W x H x D)	72 x 130.5 x 17 mm / 2.8 x 5.1 x 0.65 inch
WEIGHT	Excluding battery: 160g / Including battery: 193g / Including extended battery: 226g
DISPLAY	3.5" QVGA with backlight, TFT TouchWindow LCD, 260K, 240 x 320 3.5" VGA with backlight, TFT TouchWindow LCD, 260K, 480 x 640 (optional)
TOUCH PANEL	Analog resistance type
KEYPAD	Navigation Key, Function Keys
STANDARD BATTERY	Rechargeable, 3.7V 1,600mAh, Li-ion
EXTENDED BATTERY (optional)	Rechargeable, 3.7V 3,200mAh, Li-ion
EXPANSION SLOT	Customer-accessible MicroSD slot for removable memory card
SIM SLOT	1 SIM
AUDIO	2.5mm Headset jack
CAMERA	3 megapixel autofocus camera with LED flash
GPS	Integrated GPS with Network Independent A-GPS
PERFORMANCE CHARACTERISTICS	
CPU	PXA320 806MHz
OS	Windows Mobile 6.5
MEMORY	128 RAM (up to 256MB RAM) / 256MB ROM (up to 512MB)
INTERFACE	USB 1.1 Host & Client
USER ENVIRONMENT CHARACTERISTICS	
DROP SPEC	5ft. / 1.5m drop to steel surface, 2 drops per 6 sides
INTEGRATED RADIO	
WWAN RADIO	GSM / GPRS / eGPRS / UMTS / HSDPA (850, 900, 1800, 1900, 2100MHz) or CDMA / 1x
WLAN RADIO	IEEE 802.11b/g or CCX v4 certified IEEE 802.11 a/ b/g
WPAN RADIO	Bluetooth Class II V2.0+ EDR



Bluebird

1242, Gaepo-dong, Kangnam-gu, Seoul, Korea (ROK)

T. +82. 70.7730.8000 F. +82. 2.548.0870

www.mypidion.com www.bluebird.co.kr cn.bluebirdsoft.com

BR-BM-170-EN-MAR10-V1

Copyright © 2010 Bluebird Soft Inc. All rights reserved.

Bluebird and Pidion are registered trademarks and symbols of Bluebird Soft Inc.

Features and specifications are subject to change without prior notice.